

GENERAL:

The surface drainage system shall be Trench Drain - Flat, to be used with trench grates as manufactured by Landscape Drains.

MATERIALS:

- T304 Stainless Steel
- T316 Stainless Steel

SLOPE: 0.5% Standard, 1% Optional

DESIGN OPTIONS:

- Material(\$): SS304(5), SS316(6)
- End(*): Open(0), End Cap(1)
- Grate Width(#): 5"
- Grate Height(^): 0.25(A), 0.5(B), 0.75(C), 1(D)
- Section Lengths: Full 7'6" Standard
- Custom Lengths available
- Typical runs start with 102
- Outlet Diameter: (ND) 2", 3"

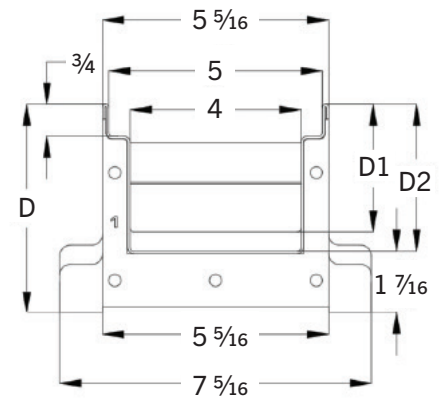
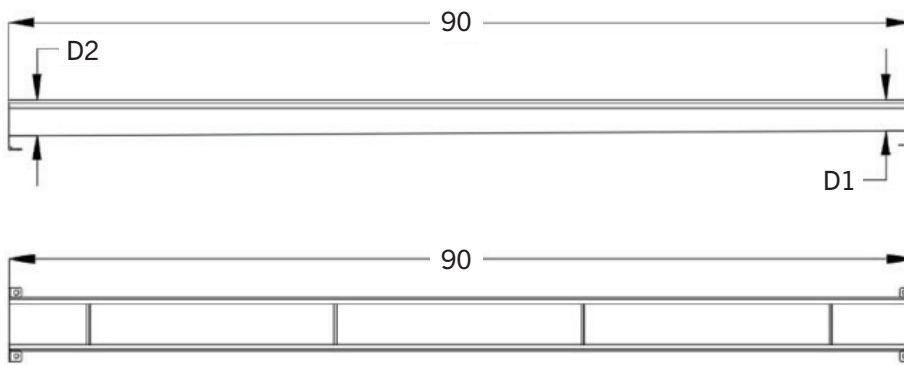
LOAD CLASS:

- A
- B (Optional)

INSTALLATION:

The Trench Drain - Flat Bottom shall be installed in accordance with the manufacturer's installation instructions and recommendations. Trench sections are manufactured with leveling bars and flanges to secure the drain within the concrete slab.

TYPICAL MODULAR LAYOUT OF A TRENCH DRAIN - FLAT BOTTOM SYSTEM



DRAIN CHANNELS DESCRIPTION	PART NUMBER	INVERT SHALLOW - D1 (INCHES)	INVERT DEEP - D2 (INCHES)
LD TRENCH - FLAT 102	LTF\$^*^#-102	3	3 7/16
LD TRENCH - FLAT 203	LTF\$^*^#-203	3 7/16	3 7/8
LD TRENCH - FLAT 304	LTF\$^*^#-304	3 7/8	4 5/16
LD TRENCH - FLAT 405	LTF\$^*^#-405	4 5/16	4 13/16
LD TRENCH - FLAT 506	LTF\$^*^#-506	4 13/16	5 1/4
LD TRENCH - FLAT 607	LTF\$^*^#-607	5 1/4	5 11/16
LD TRENCH - FLAT 708	LTF\$^*^#-708	5 11/16	6 3/16
LD TRENCH - FLAT 809	LTF\$^*^#-809	6 3/16	6 5/8
LD TRENCH - FLAT 9010	LTF\$^*^#-9010	6 5/8	7 1/16

NOTE: Also available with 90° sections, 'T' sections, for all of the depths specified below. Trench Drain Catch Basins are optional in any custom dimensions. Grate: Formed Slot Grate is our standard option to customize as required.