

**GENERAL:**

FoodSafe Hub Drains are specialized drains made to provide drainage for equipment whose drainage outlets require an air gap before draining into the main wastewater system.

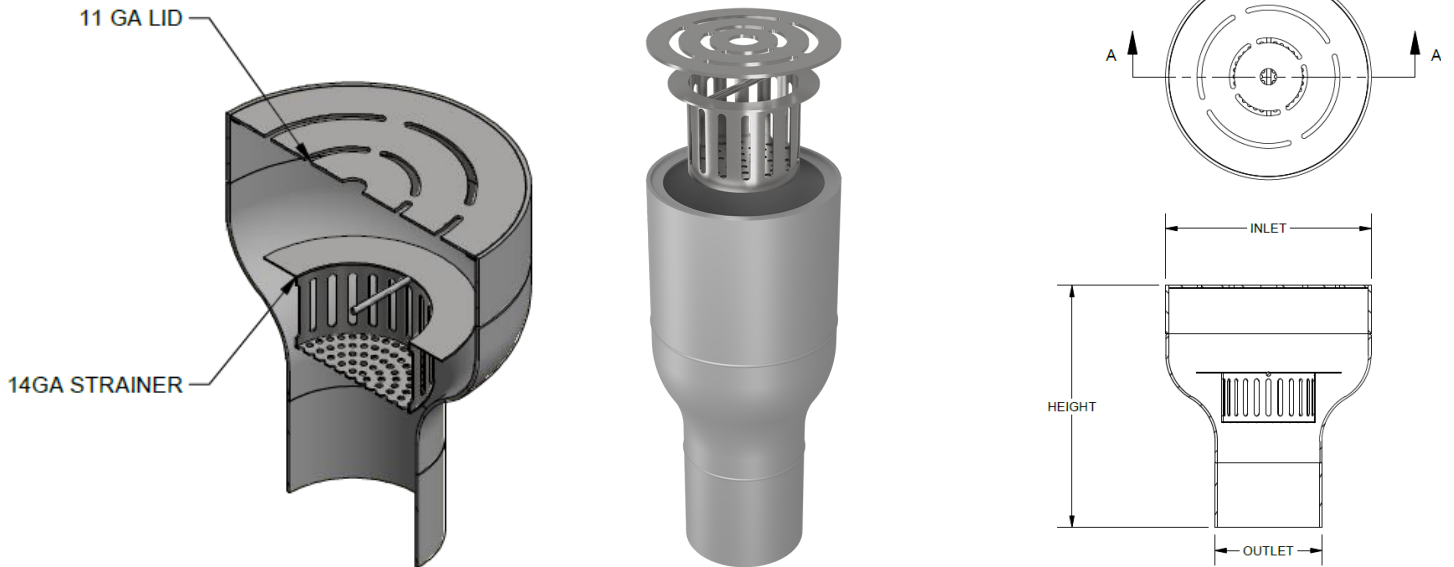
**MATERIALS:**

- Type 304L Stainless Steel
- Type 316L Stainless Steel
- Schedule 40
- Schedule 10

**INSTALLATION:**

The FoodSafe Hub Drain shall be installed in accordance with the manufacturer's installation instructions and recommendations.

**TYPICAL PROFILE OF A FOODSAFE HUB DRAIN**



DESCRIPTION	PART NUMBER	MATERIAL	INLET, NPS	OUTLET, NPS	PIPE SCHEDULE	HEIGHT
3 x 2 Hub Drain	FSHUB5010-32	Type 304L	7.6 cm	5 cm	SCH40	19 cm
4 x 3 Hub Drain	FSHUB5010-43	Type 304L	10.2 cm	7.6 cm	SCH40	20.3 cm
6 x 4 Hub Drain	FSHUB5010-64	Type 304L	15.2 cm	10.2 cm	SCH40	38.1 cm
8 x 4 Hub Drain	FSHUB5010-84	Type 304L	20.3 cm	10.2 cm	SCH40	38.1 cm
8 x 6 Hub Drain	FSHUB5010-86	Type 304L	20.3 cm	15.2 cm	SCH40	38.1 cm
12 x 6 Hub Drain	FSHUB5010-126	Type 304L	30.5 cm	15.2 cm	SCH40	38.1 cm
10 x 8 Hub Drain	FSHUB5010-108	Type 304L	25.4 cm	20.3 cm	SCH40	35.6 cm
12 x 8 Hub Drain	FSHUB5010-128	Type 304L	30.5 cm	20.3 cm	SCH40	38.1 cm
12 x 10 Hub Drain	FSHUB5010-1210	Type 304L	30.5 cm	25.4 cm	SCH40	38.1 cm
14 x 12 Hub Drain	FSHUB5010-1412	Type 304L	35.6 cm	30.5 cm	SCH40	50.8 cm
16 x 14 Hub Drain	FSHUB5010-1614	Type 304L	40.6 cm	35.6 cm	SCH40	53.3 cm

Visit [foodsafedrains.com/products/foodsafesafe-hub-drain](http://foodsafedrains.com/products/foodsafesafe-hub-drain) for more information. Specifying engineer is responsible for concrete encasement and reinforcing based upon application and local codes. FoodSafe Drains reserves the right to change the product and specifications without notice.