



**SPECIFICATIONS**

**GENERAL:**

The surface drainage system shall be Trench Catch Basin - Round, to be used with trench grates as manufactured by Global Drain Technologies.

**MATERIALS:**

14 ga. Galvanized Steel, T304 Stainless Steel, T316 Stainless Steel

**GRATES:**

Bar grate with Optional Serration/Antislip Design

**DESIGN OPTIONS:**

Material (\$): SS 304(5), SS 316(6)  
Trench Grate Height (^): 1/4" w Spacer to 2"  
Trench Grate Width (#): (W2), 152mm, 203mm, 254mm, 305mm  
Outlet Diameter: 76mm, 102mm, 152mm, 203mm  
(Custom design option available)

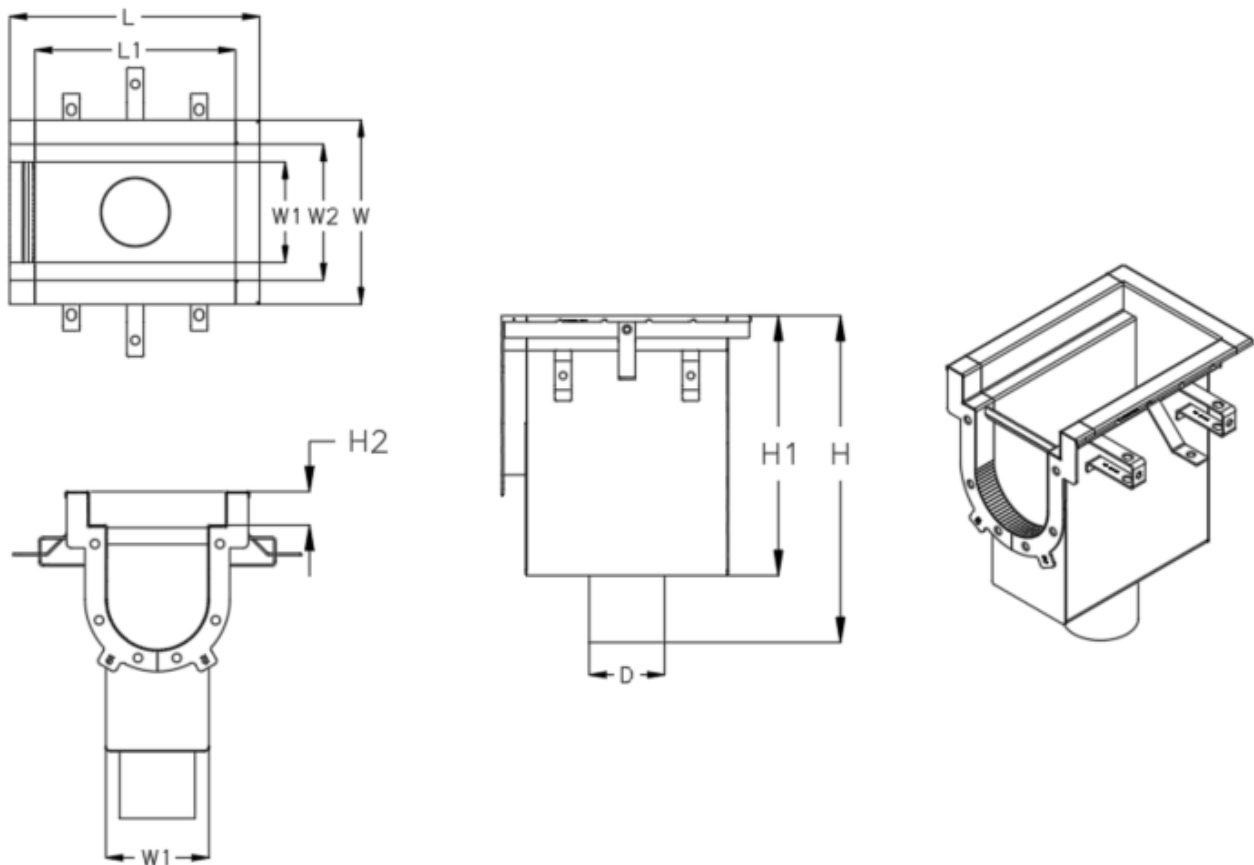
**LOAD CLASS:**

A15 to E600 Available.

**INSTALLATION:**

The Trench Catch Basin - Round Bottom shall be installed in accordance with the manufacturer's installation instructions and recommendations. Trench Catch Basins are manufactured with leveling bars and flanges to secure the drain within the concrete slab.

TYPICAL MODULAR LAYOUT OF A TRENCH CATCH BASIN - ROUND BOTTOM SYSTEM



DESCRIPTION	TOP WIDTH	TOP LENGTH	BOTTOM WIDTH	BOTTOM LENGTH	HEIGHT	OUTLET SIZE
	MM	MM	MM	MM	MM	MM
SMALL	W	379	W1	308	394	102 or 152
MEDIUM	W	379	W1	308	429	102 or 152
LARGE	W	379	W1	308	464	102 or 152

AVAILABLE IN 3 DIFFERENT DESIGN OPTIONS ACCORDING TO THE DRAIN LENGTH.

FLANGE - 5 CATCH BASIN - UP TO 4 DRAIN SECTIONS, FLANGE - 8 CATCH BASIN - UP TO 7 DRAIN SECTIONS, FLANGE - 11 CATCH BASIN - UP TO 10 DRAIN SECTIONS.

CUSTOM SIZES ARE AVAILABLE AS REQUIRED. BAR GRATING IS OUR STANDARD DESIGN, ALSO CUSTOM LIDS / GRATES AVAILABLE AS REQUIRED. SCH40 PIPES ARE STANDARD DESIGN, ALSO SCH10 AVAILABLE AS REQUIRED. OPTIONALLY AVAILABLE END, SIDE OUTLETS.

END OR MIDDLE CATCH BASIN IS OUR STANDARD. ALSO AVAILABLE IN "TEE" OR CROSS CONNECTION CATCH BASIN. AVAILABLE IN MAGLOCK / NON MAGLOCK DESIGN OPTIONS.

SPECIFYING ENGINEER IS RESPONSIBLE FOR CONCRETE ENCASEMENT AND REINFORCING BASED UPON APPLICATION AND LOCAL CODES. GLOBAL DRAIN TECHNOLOGIES RESERVES THE RIGHT TO CHANGE THE PRODUCT AND SPECIFICATIONS WITHOUT NOTICE