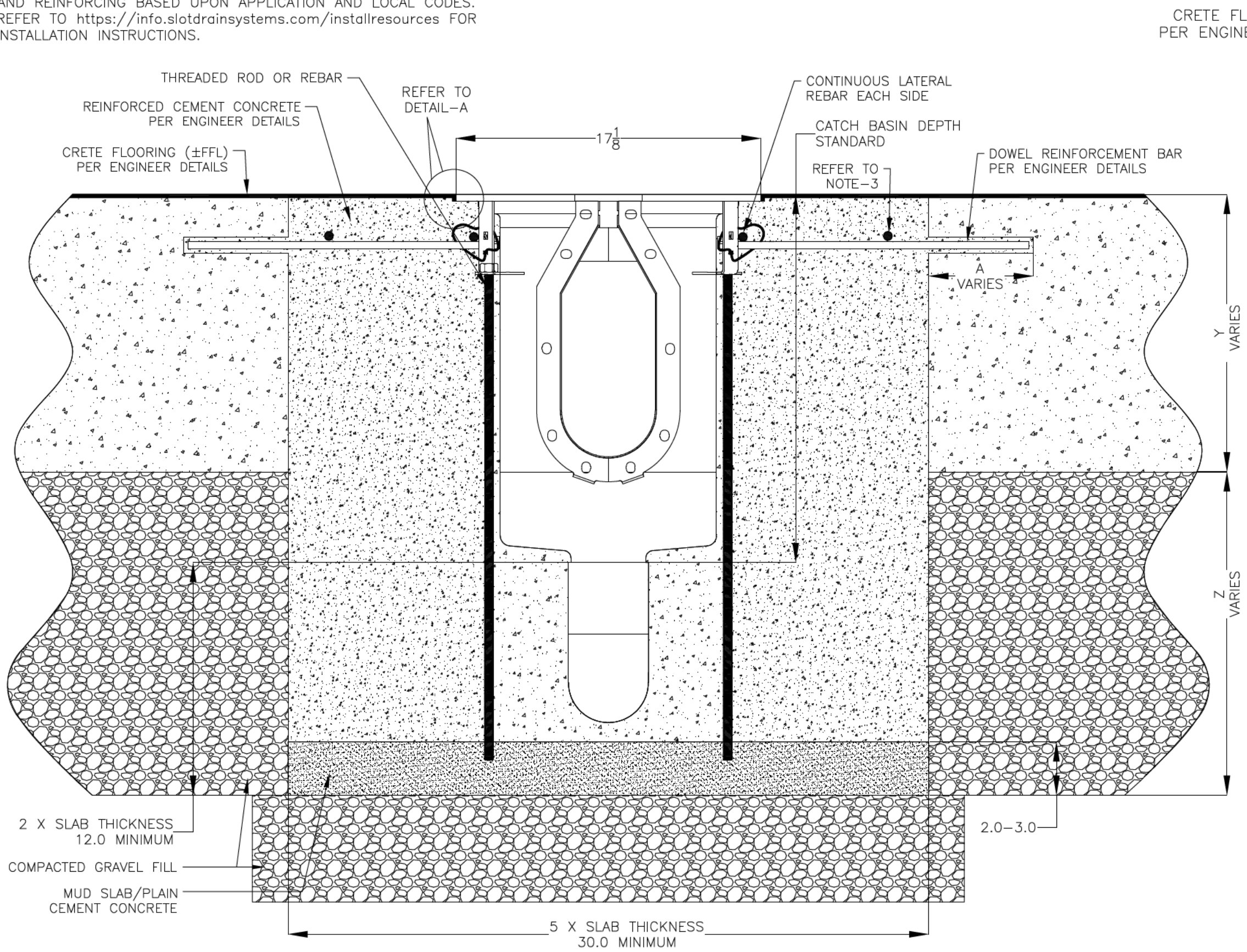


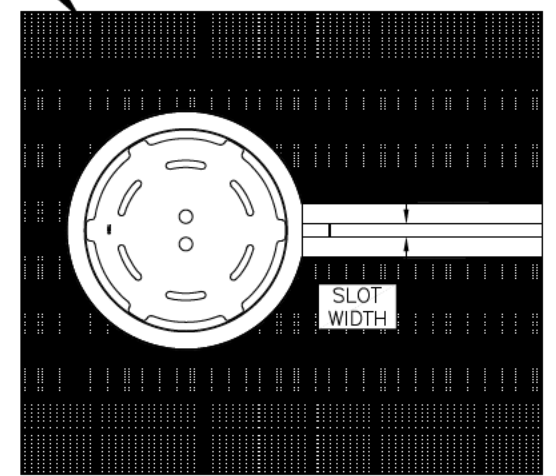
REVISIONS			
REV	DESCRIPTION	DATE	BY
0	INITIAL RELEASE - RO	3/12/2026	DK

NOTES: UNLESS OTHERWISE SPECIFIED

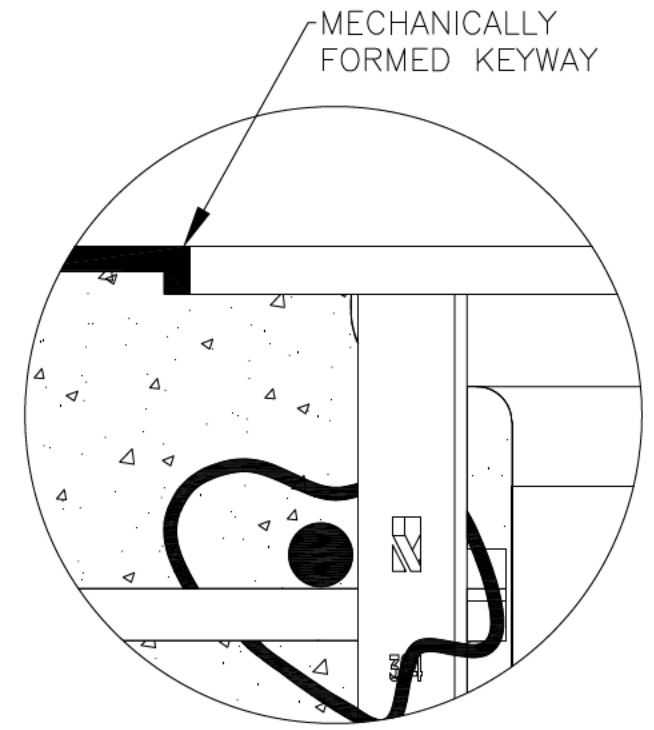
1. ALL DIMENSIONS ARE IN INCHES.
2. DRAIN BODY MATERIAL: 14GA STAINLESS STEEL T304/T316
3. SPECIFYING ENGINEER IS RESPONSIBLE FOR CONCRETE ENCASUREMENT AND REINFORCING BASED UPON APPLICATION AND LOCAL CODES.
4. REFER TO <https://info.slotdrainsystems.com/installresources> FOR INSTALLATION INSTRUCTIONS.



CRETE FLOOR (±FFL)  
PER ENGINEER DETAILS



PLAN VIEW



DETAIL-A

2 X SLAB THICKNESS  
12.0 MINIMUM  
COMPACTED GRAVEL FILL  
MUD SLAB/PLAIN  
CEMENT CONCRETE

5 X SLAB THICKNESS  
30.0 MINIMUM

Ø12X20 CIRCULAR CATCH BASIN INSTALLATION DETAILS



DRAWING TITLE  
CRETE FLOOR-RETROFIT INSTALLATION

ALL DRAWINGS ARE THE EXCLUSIVE  
PROPERTY OF SLOT DRAIN SYSTEMS.  
ANY REPRODUCTION IN PART OR IN  
WHOLE IS PROHIBITED WITHOUT  
PROPER CONSENT.

DRAIN SERIES	Ø12X20 CIRCULAR CATCH BASIN ROUND TOP	REV.	0
DWG NO.	IN-12X20RE/MP10-101-RO	SIZE	B
SCALE	NTS	SHEET	1 OF 1