

2000 L-SERIES

ELEVATOR LOBBY DRAIN

INSTALLATION GUIDE



1. During construction of the elevator lobby, cast a void in the lobby slab as shown within Figures 1 and 2.

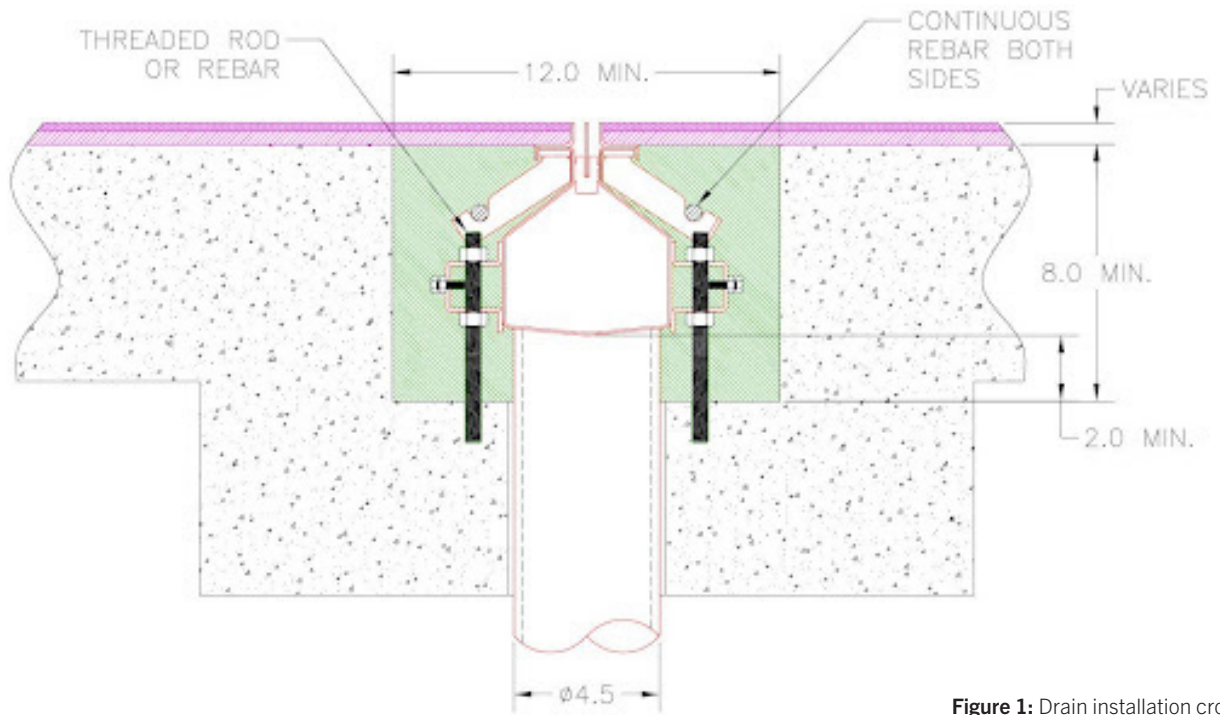


Figure 1: Drain installation cross section

2. Pour concrete for the hoistway and lobby and allow it to cure as specified by the engineer of record.
3. After the concrete has cured, remove the forms from the drain area and core a hole through the bottom of the void for the drain outlet (Figures 1 and 2).

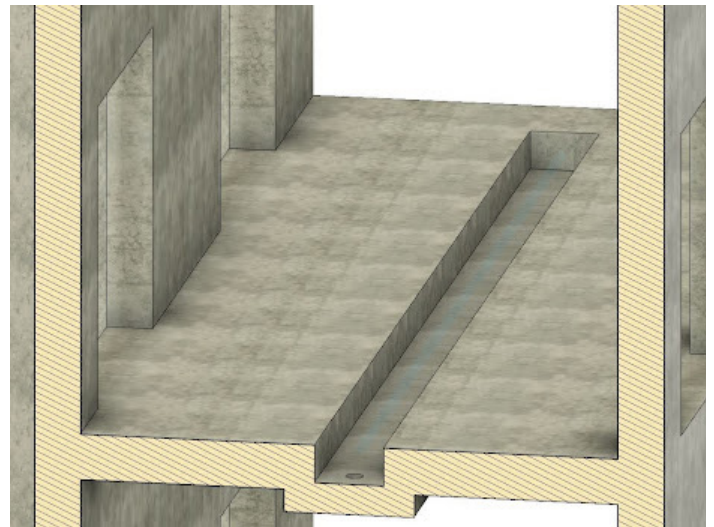


Figure 2: Drain void cast into lobby area

4. Install the drain within the void and anchor to the adjacent concrete (Figure 3). Consider the finished floor level when installing.

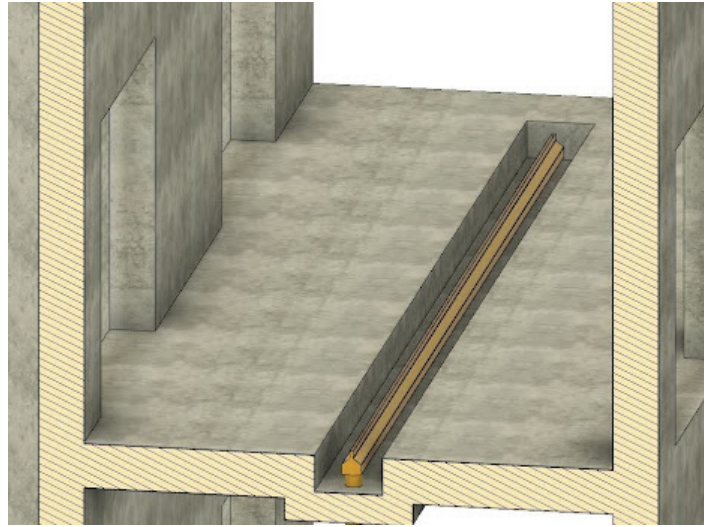


Figure 3: Install drain into cast void

5. Once the drain is installed and anchored, encase the drain and the remaining void in concrete and allow it to cure as specified by the engineer of record (Figure 4).
6. Install flooring as required flush to the top of the grate.
7. Remove any masking from the top of the drain. Clean any adhesive residue from the exposed metallic or powder coated surfaces using a cleaning agent compatible with the base metal and/or powder coated surface.
8. Clean any debris from the interior of the channel.

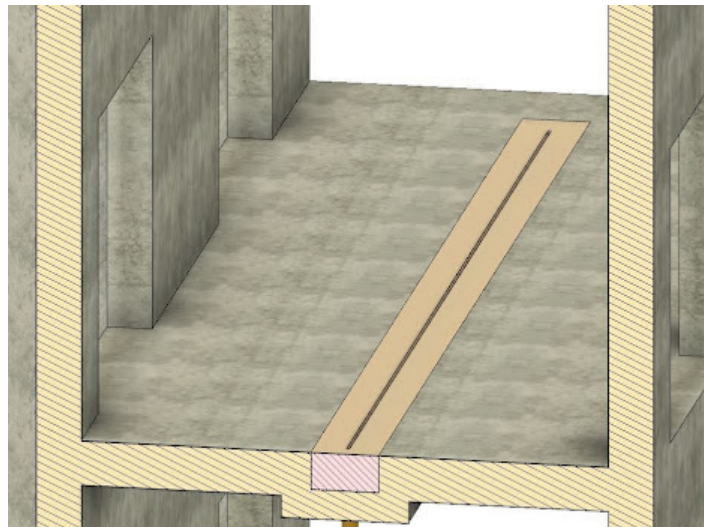


Figure 4: Encase drain in concrete