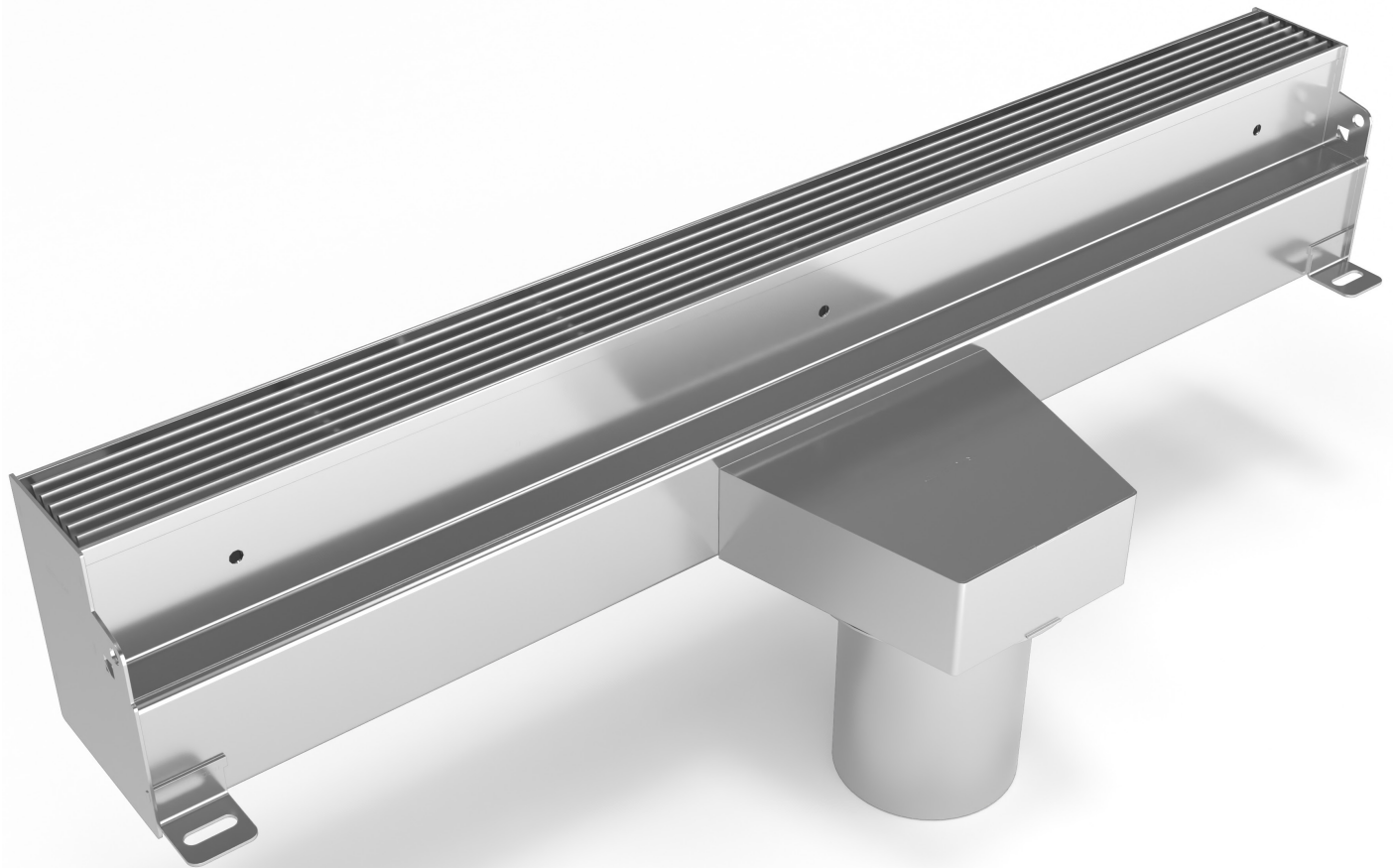


2000 T-SERIES

ELEVATOR THRESHOLD DRAIN

INSTALLATION GUIDE



1. During construction of the elevator hoistway and surrounding lobby areas, cast a void in the elevator threshold as shown within Figures 1 and 2.

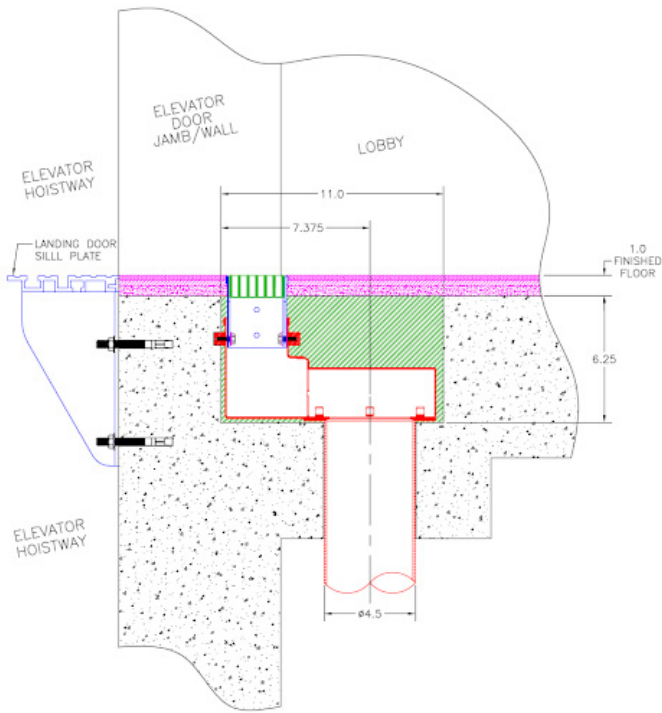


Figure 1: Threshold Drain Cross Section

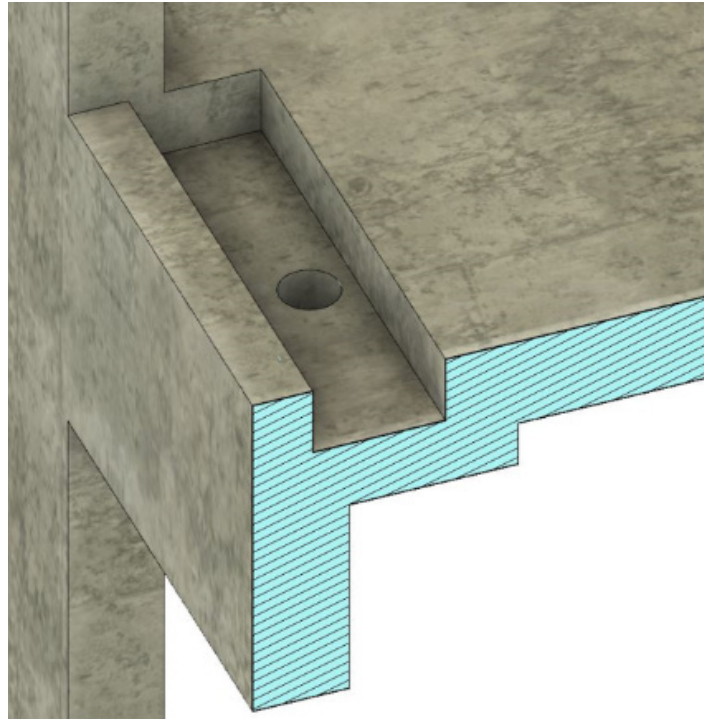


Figure 2: Drain void cast into threshold area

2. Pour concrete for the hoistway and lobby and allow it to cure as specified by the engineer of record.
3. After the concrete has cured, remove the forms from the drain area and core a hole through the bottom of the void for the drain outlet (Figures 1 & 2) .
4. Install the drain within the void and anchor to the adjacent concrete (Figure 3). Consider the finished floor level when installing. Some drain models have an adjustable grate height while other models do not allow for vertical adjustment of the grate height.

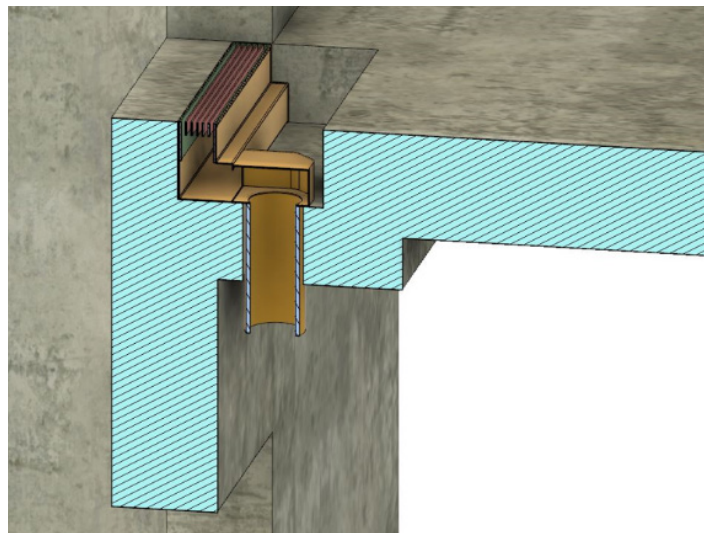


Figure 3: Install drain into threshold void

5. Once the drain is installed and anchored, encase the drain and the remaining void in concrete and allow it to cure as specified by the engineer of record (Figure 4).

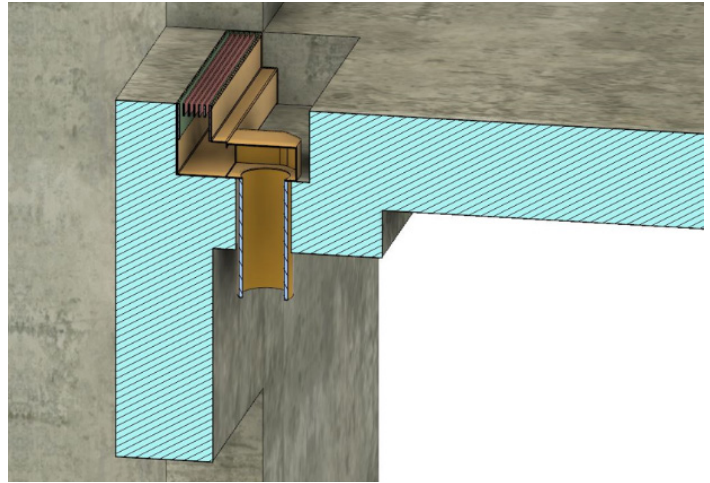


Figure 4: Encase drain in concrete

6. On models with a vertically adjustable grate, remove the grate and loosen the bolts that secure the grate seating frame. Adjust the seating frame vertically so the top of the grate will be flush with the finished floor level (Figure 5). Torque the bolts as specified by the manufacturer.

NOTE: Do not misplace the critical lock washers located between the bolt and the frame on these models. These washers are essential for preventing grate movement.

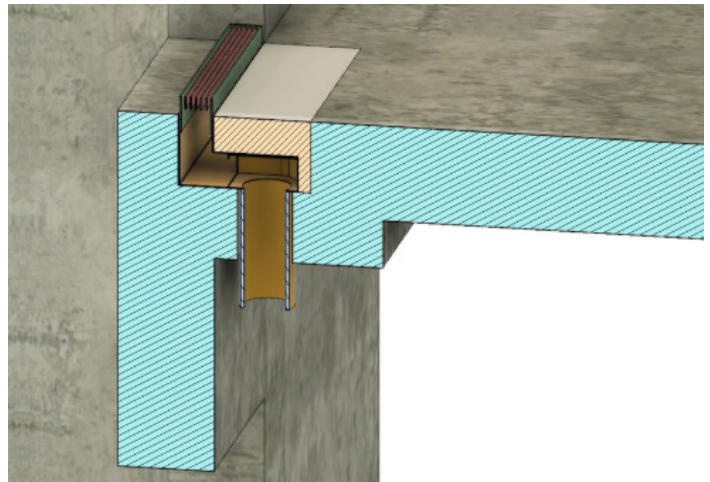


Figure 5: Adjust grate vertically as required

7. Install flooring as required flush to the top of the grate (Figure 6).
8. Remove any masking from the top of the drain. Clean any adhesive residue from the exposed metallic or powder coated surfaces using a cleaning agent compatible with the base metal and/or powder coated surface.
9. Clean any debris from the interior of the channel.

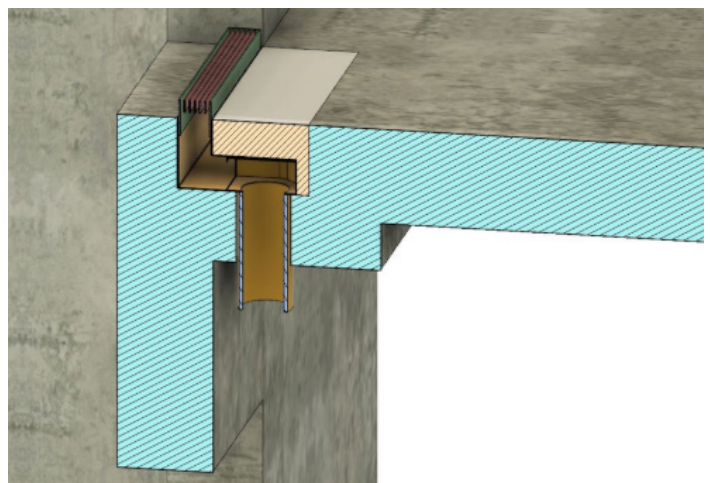


Figure 6: Install flooring